

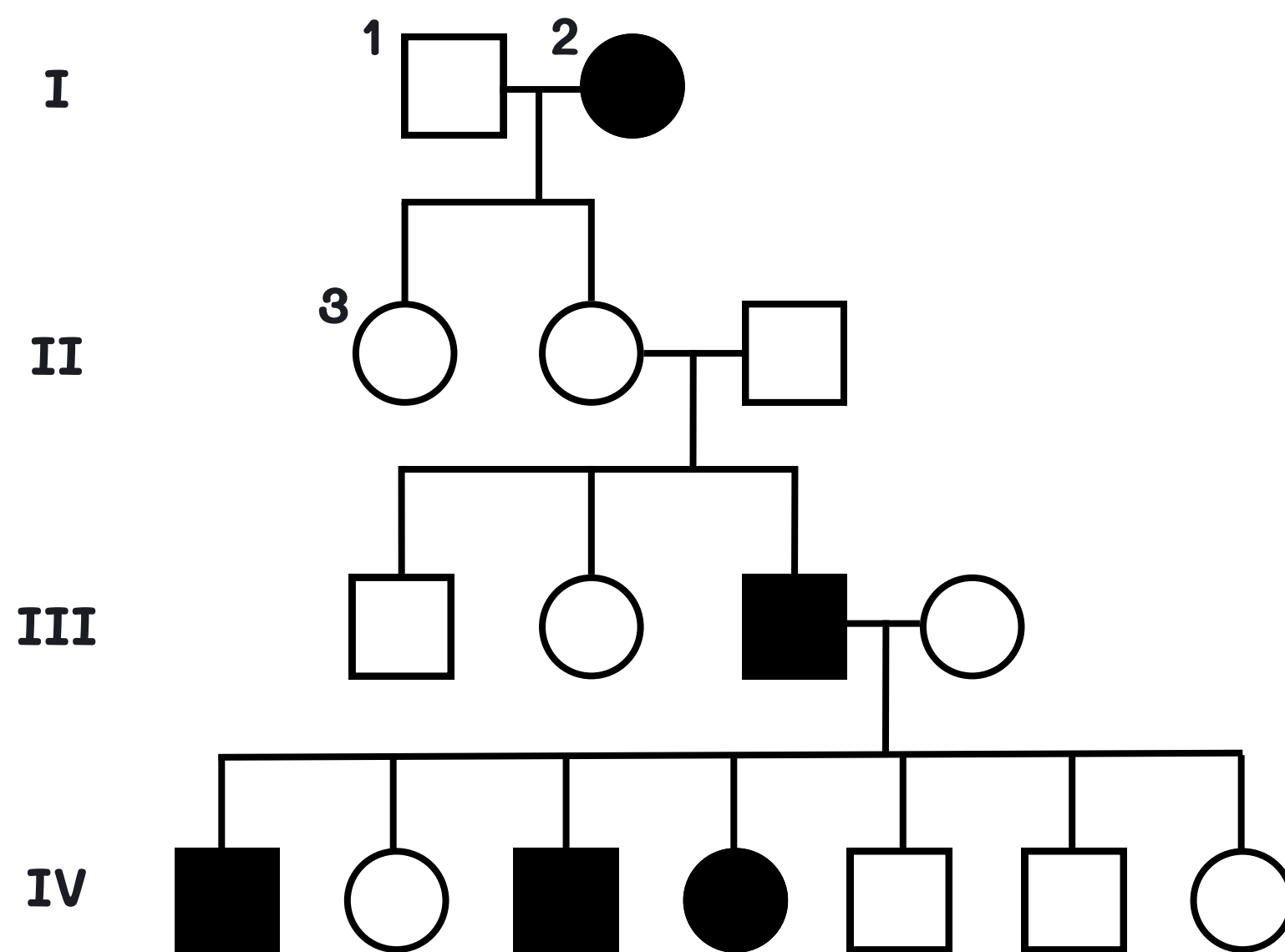
PEDIGREE WORKSHEETS



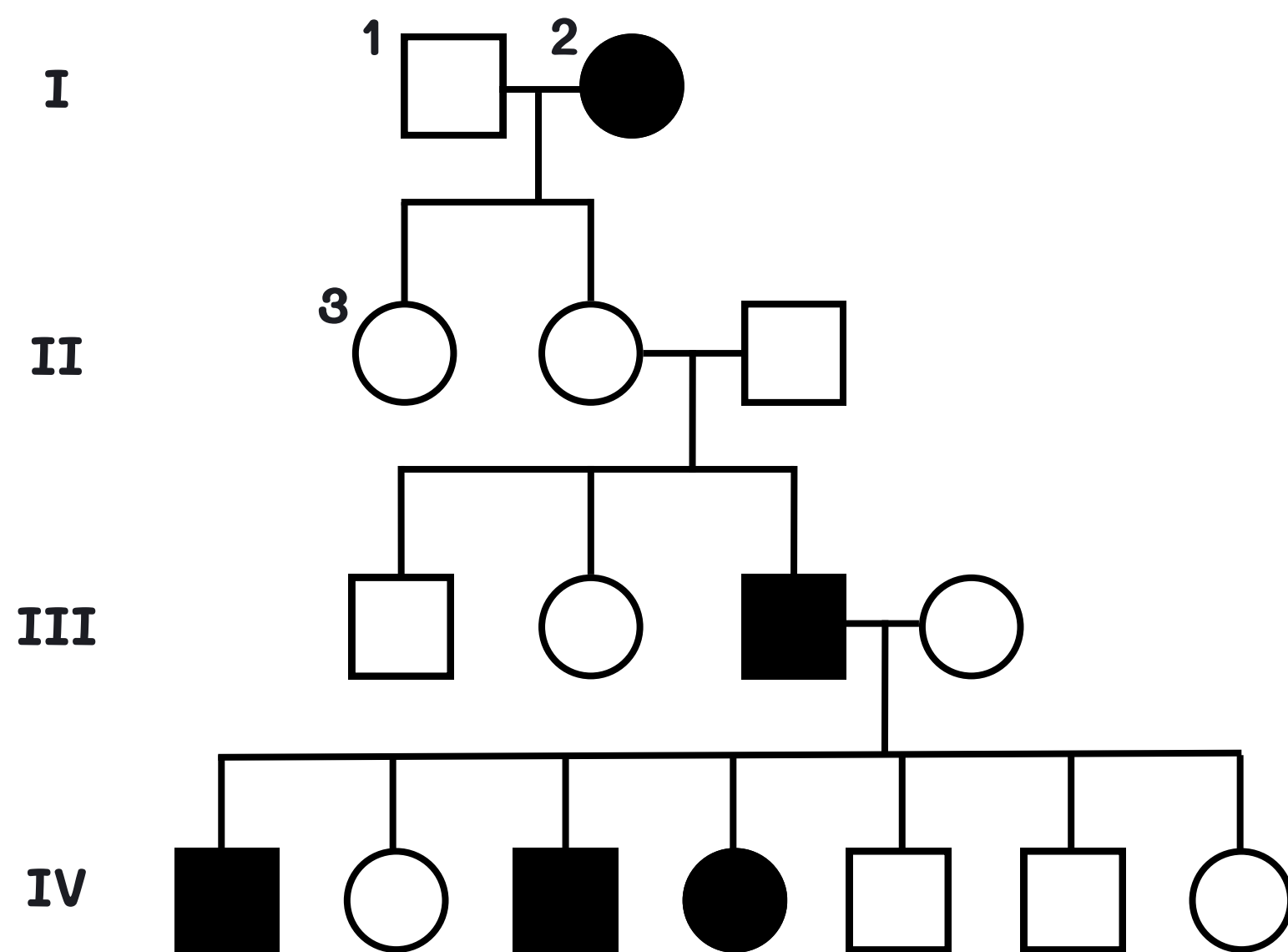
Name :

Date :

Directions: Use the pedigree answer the question below!



- In a pedigree, a square represents a male. If it is darkened he has hemophilia; if clear, he had normal blood clotting.
 - How many males are there?
 - How many males have hemophilia?
- A circle represents a female. If it is darkened, she has hemophilia; if open she is normal.
 - How many female are there?
 - How many females have hemophilia?
- A marriage is indicated by a horizontal line connecting a circle to a square.
 - How many marriages are there?
- A line perpendicular to a marriage line indicates the offspring. If the line ends with either a circle or a square, the couple had only one child. However, if the line is connected to another horizontal line, then several children were produced, each indicated by a short vertical line connected to the horizontal line. The first child born appears to the left and the last born to the right.
 - How many children did the first couple (couple in row I) have?
 - How many children did the third couple (couple in row III) have?
- Level I represent the first generation, level II represents the second generation.
 - How many generations are there?
 - How many members are there in the fourth generation?



1. In a pedigree, a square represents a male. If it is darkened he has hemophilia; if clear, he had normal blood clotting.
 - a. How many males are there? 8
 - b. How many males have hemophilia? 3
2. A circle represents a female. If it is darkened, she has hemophilia; if open she is normal.
 - a. How many female are there? 8
 - b. How many females have hemophilia? 2
3. A marriage is indicated by a horizontal line connecting a circle to a square.
 - a. How many marriages are there? 3
4. A line perpendicular to a marriage line indicates the offspring. If the line ends with either a circle or a square, the couple had only one child. However, if the line is connected to another horizontal line, then several children were produced, each indicated by a short vertical line connected to the horizontal line. The first child born appears to the left and the last born to the right.
 - a. How many children did the first couple (couple in row I) have? 2
 - b. How many children did the third couple (couple in row III) have? 7
5. Level I represent the first generation, level II represents the second generation.
 - a. How many generations are there? 4
 - b. How many members are there in the fourth generation? 7